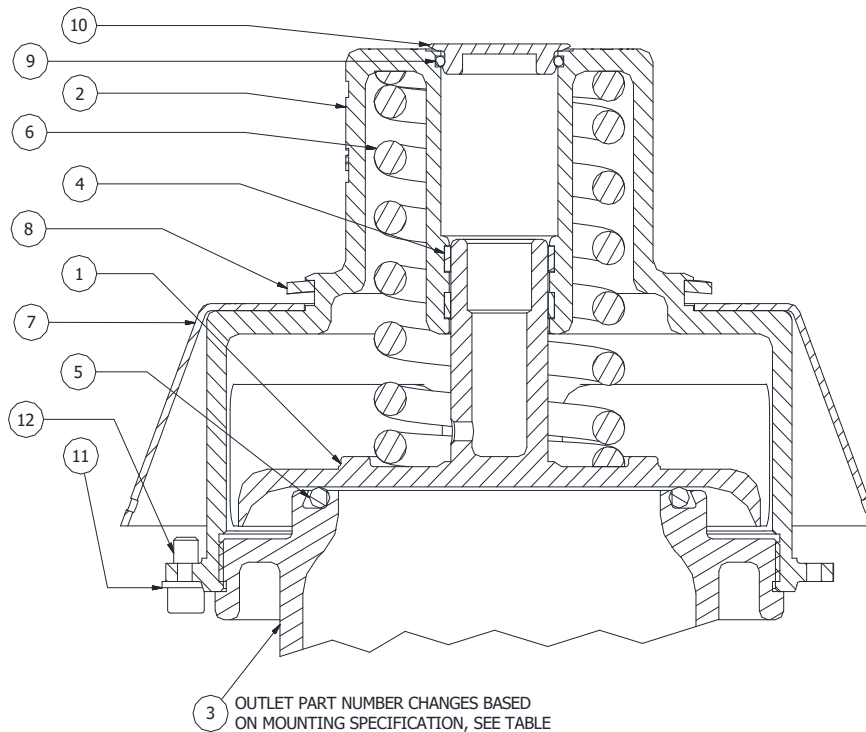


# GUARDIAN™ 407/412 PRESSURE VENT

## PARTS LIST



No.	Req'd	Description	Material	Part Number
1	1	Disc	316SS	28797SS
2	1	Body	316SS	28795SS
3	1	Outlet	316SS	*Varies*
4	2	Bearing Ring	Graphite/PTFE	75639TR3.15
5	1	O-Ring	Tef-sil	75553TS
6	1	Spring	PTFE/SS	75809SSTF-**
7	1	Shroud	316SS	28832SS
8	1	Wave Ring	Stainless	9Q5059
9	1	O-Ring	FKM GFLTs	3357VF
10	1	Cylinder Cap	316SS	75818SS
11	1	Lock Washer	Stainless	9Q5844
12	1	Cap Screw	Stainless	9Q5993

Assembly Number	Outlet Style	Outlet Part Number
RVP3N*-**	3" NPS	28793SS
RVP3A*-**	3" ANSI FLG	28877SS
RVP3S*-**	3" NPS SWIVEL	28887SS
RVP3W*-**	3" WELD STUB	28872SS
RVP4N*-**	4" NPS	28791SS
RVP4A*-**	4" ANSI FLG	28868SS
RVP4S*-**	4" NPS SWIVEL	28888SS
RVP4F*-**	4" TTMA FLG	28874SS
RVP4W*-**	4" WELD STUB	28870SS

Assembly Number	Outlet Gasket
RVP3N*-**	75800TF-3
RVP3S*-**	75800TF-3
RVP4N*-**	75800TF-4
RVP4S*-**	75800TF-4
RVP4F*-**	RGA401TD

`\*` Standard material shown, can change with different seal material versions.

`\*\*` Suffix indicates extension for correct spring corresponding to valve's indicated MAWP rating.



Designed, engineered and manufactured in the USA. 