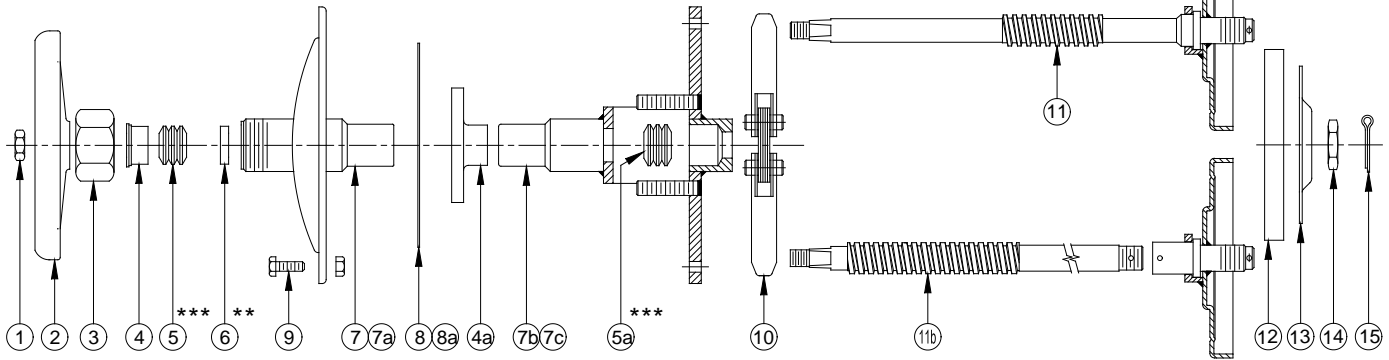


PARTS LIST

Hydrolet Valves



No.	Description	Req'd.	Size	Material	Part No.
1	Hex Nut 7/16-14 Thd.	1	3"-4"	Steel Zinc Plt.	9Q8579
				304 Stnls	9Q8580
2	Handwheel	1	3"	Aluminum	25186AL
			4"	Aluminum	25245AL
3	Stuffing Box Nut	1	3"-4"	Aluminum	15026AL
				304 Stnls	15026SL
4	Top Gland	1	3"-4"	316 Stnls	15220SS
4a	Top Gland OS&Y Style	1	3"-4"	304 Stnls	16758SL
5***	Teflon Packing	1	3"-4"	Teflon	19649TF
5a***	Teflon Packing	1	3"-4"	Teflon	19648TF
6**	Bottom Gland	1	3"-4"	316 Stnls	15076SS
7	Tophead & Bonnet Bolted Style	1	3"	Steel	15382MS
				Aluminum	15382AL
			4"	Steel	25365MS
				Aluminum	25365AL
7a	Tophead & Bonnet QRB Style	1	3"	316 Stnls	15573SS
				Aluminum	15573AL
			4"	316 Stnls	16126SS
				Aluminum	16126AL
7b	Tophead & Bonnet QRB OS&Y	1	3"	316 Stnls	26133SS
				Aluminum	26133AL
			4"	316 Stnls	26138SS
				Aluminum	26138AL
7c	Tophead & Bonnet Bolted OS&Y	1	3"	Steel	26145MS
				Aluminum	26145AL
			4"	Steel	26150MS
				Aluminum	26150AL
8	Tophead Gasket Bolted Style	1	3"	Cork-Buna-N	15022CB
				Non-Asbestos	15022NA
				Teflon-Env.	15022TF
			4"	Cork-Buna-N	15265CB
				Non-Asbestos	15265NA
				Teflon-Env.	15265TF

No.	Description	Req'd.	Size	Material	Part No.
8a	Tophead Gasket QRB Style	1	3"	Cork-Buna-N	15905CB
				Teflon-Env.	15905TF
			4"	Cork-Buna-N	15977CB
				Teflon-Env.	15977TF
9	Bolts & Nuts (Sets)	Set	3"	Steel Zinc Plt.	15023ZC
				18-8 Stnls	15023SL
			4"	Steel Zinc Plt.	16549ZC
				18-8 Stnls	16549SL
10	QRB Clamp	1	3"	304 Stnls	25641SL
			4"	304 Stnls	25683SL
11	Disc Holder & Stem Assy. Bolted & QRB Style	1	3"	All Aluminum	17683AL
				All Steel	17683MS
				All Stnls	17683SS
			4"	All Aluminum	17684AL
				All Steel	17684MS
				All Stnls	17684SS
11a	Disc Holder & Stem Assy. OS&Y Style	1	3"	Steel	28003MS
				316 Stnls	28003SS
			4"	Steel	28004MS
				316 Stnls	28004SS
12	Disc	1	3"	Buna-N	15202BU
				Non-Asbestos	15202NA
				Teflon	15202TF
				Viton	15202VT
			4"	Buna-N	15024BU
				Non-Asbestos	15024NA
				Teflon	15024TF
				Viton	15024VT
13	Disc Retaining Plate	1	3"	316 Stnls	17028SS
			4"	Steel	15051MS
				Aluminum	15051AL
				316 Stnls	15051SS
14	Disc Plate Nut	1	3"-4"	316 Stnls	15204SS
15	Cotter Pin 1/8x1	1*	3"-4"	316 Stnls	9Q5867

** This part note req'd. on OS&Y Models

* 2 Req'd. on OS&Y Models

*** Note:

No. 5 used with Std. Bonnet Models only.
No. 5a used with OS&Y Models only.

HYDROLET SUB-ASSEMBLIES

Size	Hydrolet Material	Bolted Style	Bolted OS&Y Style	QRB Style	QRB-OS&Y Style
3"	Steel	WV17593MSB	WV17607MSB		
	Aluminum	WV17593ALB	WV17607ALB	WV17609ALB	WV17611ALB
	316 Stnls.			WV17609SST	WV17611SST
4"	Steel	WV17594MSB	WV17608MSB		
	Aluminum	WV17594ALB	WV17608ALB	WV17610ALB	WV17612ALB
	316 Stnls.			WV17610SST	WV17612SST

NOTES: Cotter pins only provided on sub-assemblies ordered with either Teflon or Non-Asbestos disc.

Bolted sub-assemblies do not include QRB clamp (Item #10)

QRB sub-assemblies do not include Bolts & Nuts (Item #9)

Steel and Aluminum sub-assemblies are standard with Buna-N disc, Cork-Buna-N Gasket and Non-Asbestos packing (Suffix "B").

Stainless sub-assemblies are standard with Teflon disc, packing and gasket (Suffix "T").

VARIATIONS: (Suffix "A"-Bolted Style) when used would include non-asbestos disc, packing and gasket.

(Suffix "A"-QRB Style) when used would include non-asbestos disc, packing and teflon gasket.

(Suffix "V"-Bolted or QRB Style) when used would include viton disc, teflon packing and gasket.

WARNING Use only genuine Betts Industries Inc. replacement parts. Use of substitute parts can impair the proper functioning of this product.