



## ***Pneumatic Operated 4" Sliding Valve (Replaceable O-ring Seat) - ANSI Flange x ANSI Flange***

- Air Open / Spring Close
- Teflon Encapsulated Seats
- TTMA, ANSI, or Sump Flange Drilling

The Betts Pneumatic sliding valve meets requirements for an external self-closing stop valve. Valve does not contain a shear section. The cargo tank must protect the valve by providing suitable protection as specified in 49 CFR 178.345-8. The cylinder is air open with spring close and requires 90 psi line pressure to fully open. The PTFE encapsulated o-rings provide a positive seal for pressure or vacuum service and standard 316 stainless steel discs offer premium corrosion resistance. The adjustable packing nut with woven PTFE infused packing allows for easy stem adjustments. The air cylinder max working temperature is 250° F (121° C). A fusible plug, set to melt above 212° F (100° C), is installed in air cylinder to dump air pressure in case of fire.

Assembly No.	Description	A	B	C	D	E	Wt.
SV754****	ANSI Flange x ANSI Flange	26.88" [683 mm]	31.88" [810 mm]	6.88" [175 mm]	N/A	N/A	27.0 lb. [12.2 kg]

\*\*\*\* Last four letters of part number designates material of construction as shown below:

### Example Assembly

### **SV754SSTS**

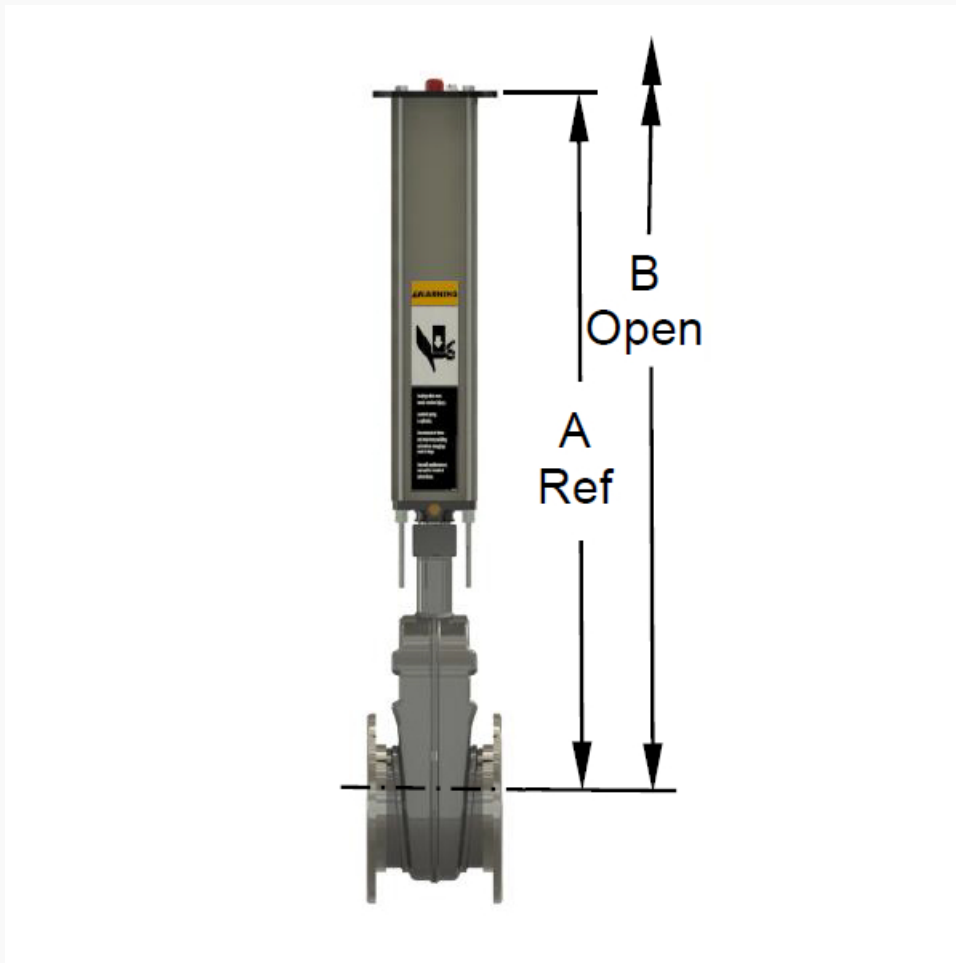
(Pneumatic Operated 4" Sliding Valve (Replaceable O-ring Seat) - ANSI Flange x ANSI Flange)

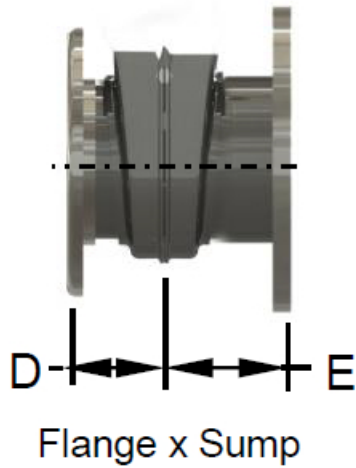
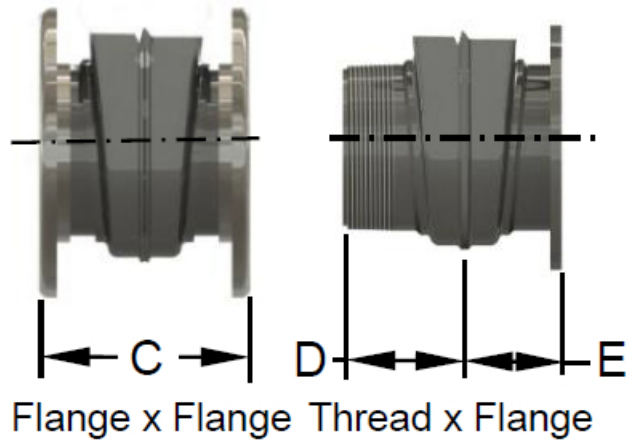
### Disc Materials

**MSTS** = Steel Body with 316 Stainless Stem & Gates

**SSTS** = 316 Stainless Body, Stem & Gates

**\*\* MAWP certified for new valves only. Seat/disc damage or wear may reduce sealable MAWP.**





### Teflon Accordion Packing

Use suffix "008" for valve less actuator. A heat tube option is available for 4" and 6" sizes by adding suffix "J" to end of part number. (Heat tube MAWP = 150 psi)

Body Material	Valve MAWP**	Min. Burst Pressure	Temp. Range
Steel or Stainless	50 psi [3.4 bar]	200 psi [13.8 bar]	-40°F to 400°F [-40°C to 204°C]

**NOTE:** Valve should NEVER be heated with flame



**WARNING:** This product can expose you to chemicals including Chromium (hexavalent compounds) which is known to the State of California to cause cancer, birth defects or other reproductive harm. For more information go to: [www.P65Warnings.ca.gov](http://www.P65Warnings.ca.gov). For additional information on Betts products and Proposition 65 list please see: <http://www.bettsind.com/prop-65/>