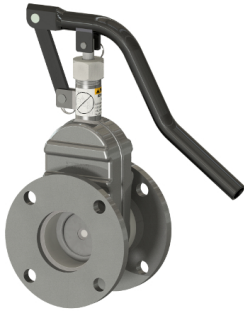




Manual 3" Sliding Valve - ANSI Flange x ANSI Flange



The Betts sliding valve is an economical manually operated external stop valve that provides a quick open or close function. The 316 stainless discs offer premium corrosion resistance and the adjustable packing nut with woven PTFE infused packing allows for easy stem adjustments. The metal to metal seal has advantages for many applications, but is susceptible to wear and scratches. If a maintainable seal valve is required, please see Betts line of replaceable o-ring seat sliding valves.

Assembly Number	Flange Dims.	Dimensions	Wt.
SV953***	OD: 7.25" [184 mm]	A: 9.63" [244 mm]	19.0 lb. [8.6 kg]
	BC: 6.00" [152 mm]	B: CLOSE 12.06 " [306 mm]	
	Holes: 4 - .75" [4 - 19 mm]	OPEN 19.63" [496 mm]	
	Thick.: .50" [13 mm]	C: 5.12" [130 mm]	
		D: N/A	
		E: N/A	

*** Last three letters of part number designate material of construction as shown below:

Example Assembly

SV953SSM

(Manual 3" Sliding Valve - ANSI Flange x ANSI Flange)

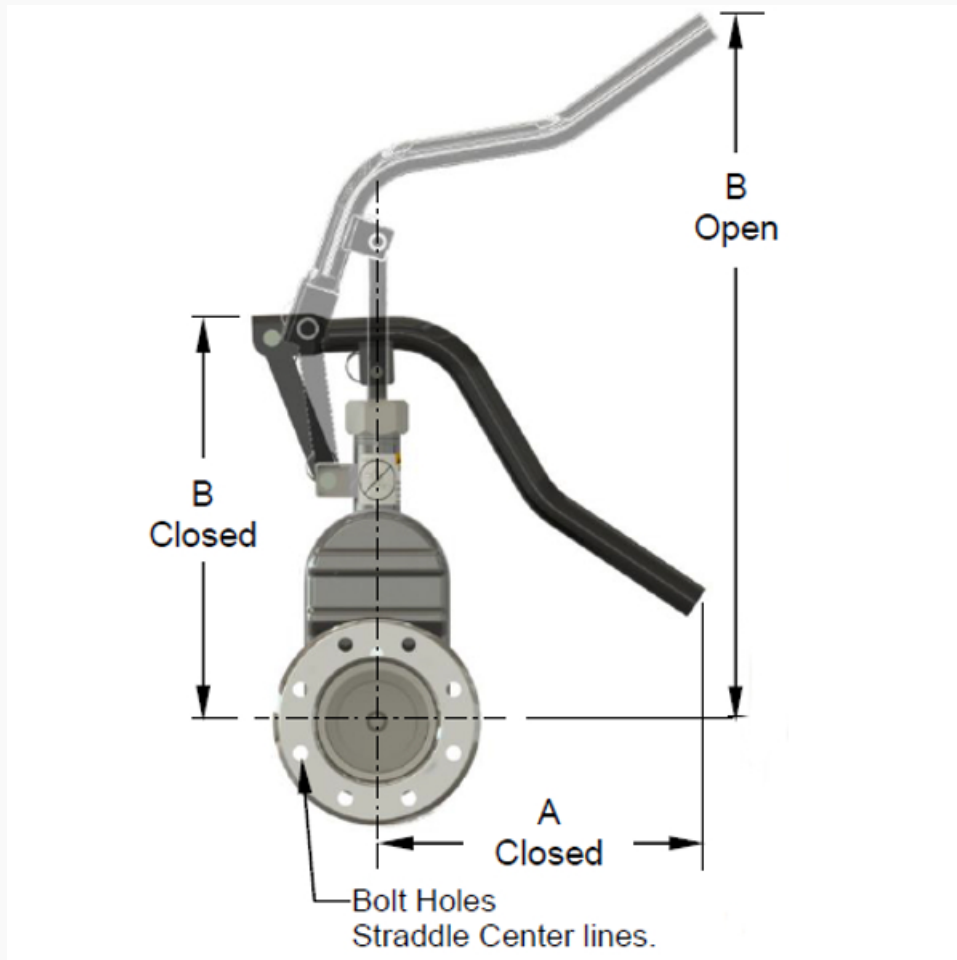
Disc Materials

MSM = Steel Body with 316 Stainless Stem & Gates

SSM = 316 Stainless Body, Stem & Gates

Flange bolt pattern per TTMA recommendations and grooved outlets per MIL-C-10387B.

** MAWP certified for new valves only. Seat/disc damage or wear may reduce sealable MAWP.





Teflon Accordion Packing

A heat tube option is available for 4" and 6" size by adding suffix "J" to part number.

(Heat tube MAWP = 150 psi)

Body Material	Valve MAWP**	Min. Burst Pressure	Temp. Range
Steel or Stainless	50 psi [3.4 bar]	200 psi [13.8 bar]	-40°F to 500°F [-40°C to 260°C]

NOTE: Valve should NEVER be heated with flame

EB-1-15: Important Notification for Gate/Sliding Valves Used in Hot Service Application

⚠ WARNING: This product can expose you to chemicals including Chromium (hexavalent compounds) which is known to the State of California to cause cancer, birth defects or other reproductive harm. For more information go to: www.P65Warnings.ca.gov. For additional information on Betts products and Proposition 65 list please see: <http://www.bettsind.com/prop-65/>