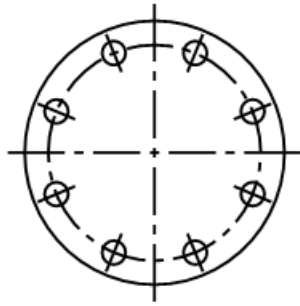


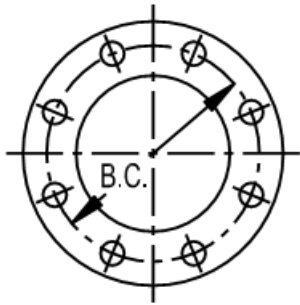
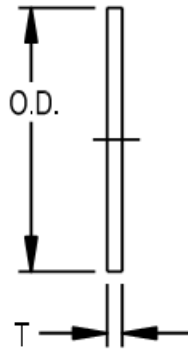
3" Piping Weld Flanges (TTMA)

Betts weld flanges are designed for use on cargo tanks with bolt-hole patterns in accordance with TTMA recommended practices. Flange performance is dependent on proper weld procedures with an achievable MAWP of 75 psi [5.2 bar] for steel and stainless and 50 psi [3.4 bar] for aluminum.

Weld Flanges Part No.	Blind Flanges Part No.	Material	Dimensions	Holes	Weight (n/a for blind flanges)
WF301AL	BWF301AL	Alum.	T (Thickness): .375" [9.5 mm] I.D.: 3.56" [90.4 mm] (n/a for blind flanges) O.D.: 5.63" [143 mm] B.C.: 4.88" [124 mm]	# of: 8 Dia.: .44" [11.2 mm]	.62 lb. [.28 kg]
WF301MS	BWF301MS	Steel	T (Thickness): .25" [6.4 mm] I.D.: 3.56" [90.4 mm] (n/a for blind flanges) O.D.: 5.63" [143 mm] B.C.: 4.88" [124 mm]	# of: 8 Dia.: .44" [11.2 mm]	.97 lb. [.44 kg]
WF301SS	BWF301SS	316 SS	T (Thickness): .375" [9.5 mm] I.D.: 3.56" [90.4 mm] (n/a for blind flanges) O.D.: 5.63" [143 mm] B.C.: 4.88" [124 mm]	# of: 8 Dia.: .44" [11.2 mm]	1.44 lb. [.65 kg]



BLIND FLANGE



WELD FLANGE

