

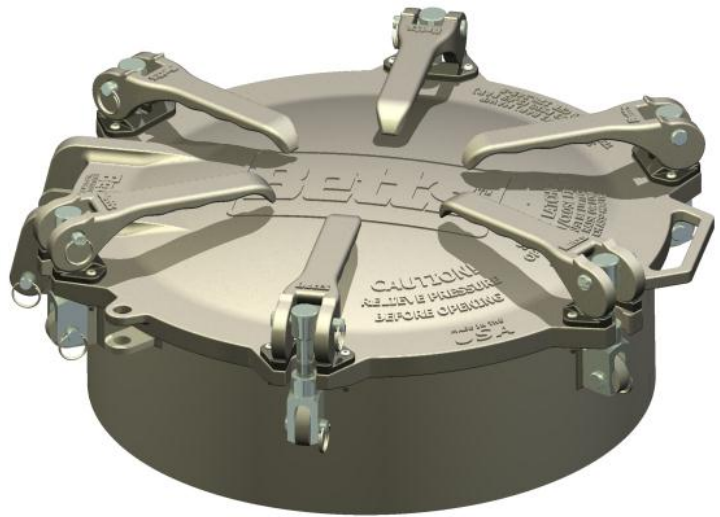
20" CAM-LATCH MANHOLE

35 psi (2.4 bar) MAWP

Betts Industries' Cam-Latch Manhole offers a high-quality, robust design able to meet the stringent requirements of the transportation and processing industries. Whether it is for railcar or over-the-road, liquid or dry bulk, this manhole fills the requirement.

Manhole Specification

Model 8555 is a 20" full opening cam-latch manhole equipped with a quick opening cast aluminum cover which has a lift handle, two padlock tabs and replaceable nylon wear saddles. Six smooth-operating aluminum latches attached to robust 5/8" swingbolts are secured to the collar utilizing a single lug design. The hold-downs are adjustable to create a positive seal between the cover and collar. The cover incorporates innovative safety latches on each side of the handle. These safety latches will not swing off the cover until the cover is lifted slightly off the collar and residual tank pressure is relieved ensuring a stuck cover will not over-ride the safety mechanism. Manhole meets requirements of 49CFR §178.345-5 and §178.347-3.



MODEL 8555

See Section 92 Page 1B for parts list.

Part Number	Materials of Construction			Weight	Collar Height ‡	Gasket ††
	Hardware	Weld Collar	Cover and Cam Levers			
8555ABF-6	Zinc Plated Steel	Aluminum	Aluminum	41 lb (18.6 kg)	6" (152 mm)	White FDA Nitrile (Buna-N)
8555ACF-6	Stainless Steel					
8555SBF-6	Zinc Plated Steel	Steel	Aluminum	60 lb (27.2 kg)		
8555SCF-6	Stainless Steel					
8555CBF-6	Zinc Plated Steel	304 Stainless	Aluminum			
8555CCF-6	Stainless Steel					

Technical Specifications

Design Pressure *		Test Pressure *	Design Temperature	
Internal MAWP	External MAWP		Minimum	Maximum
35 psi (2.4 bar)	14.7 psi (1.0 bar)	53 psi (3.65 bar)	-40°F (-40°C)	250°F (121°C)

Letter	Material
F	White FDA Nitrile (Buna-N)
V	Black FKM (Viton®)
Q	Fluorosilicone

‡ Alternate collar height available by designating 4, 8, or 10 as last number of part number.

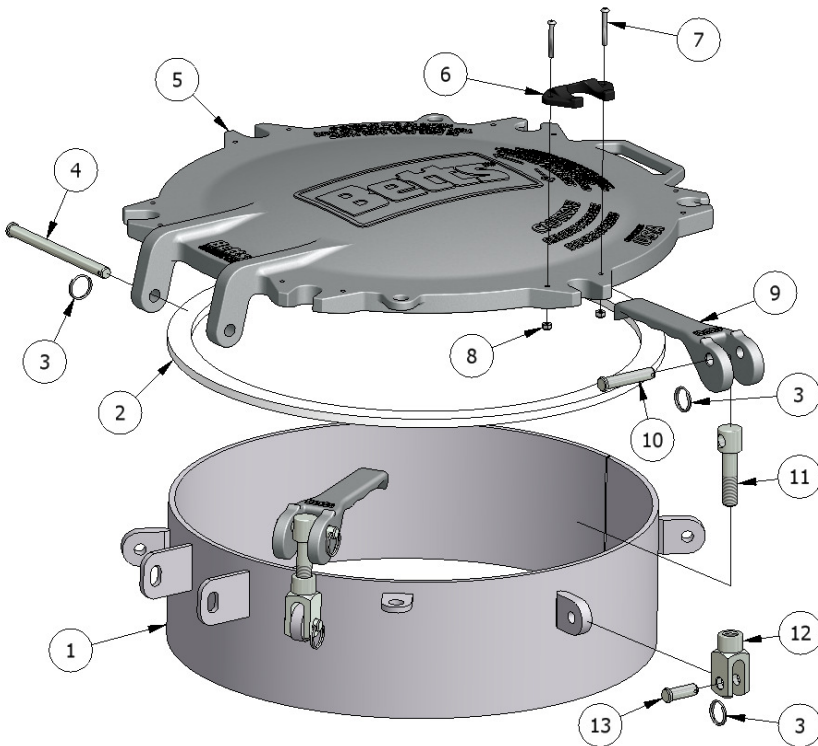
†† Alternate gasket material available. See table at right.

* Tests were conducted and ratings determined using white nitrile gasket.

Note: During welding of the collars to the tank, care should be exercised to insure the collars remain flat and round in order to assure proper performance. If necessary, a welding fixture should be used to prevent distortion.

Parts List

20" CAM-LATCH MANHOLE

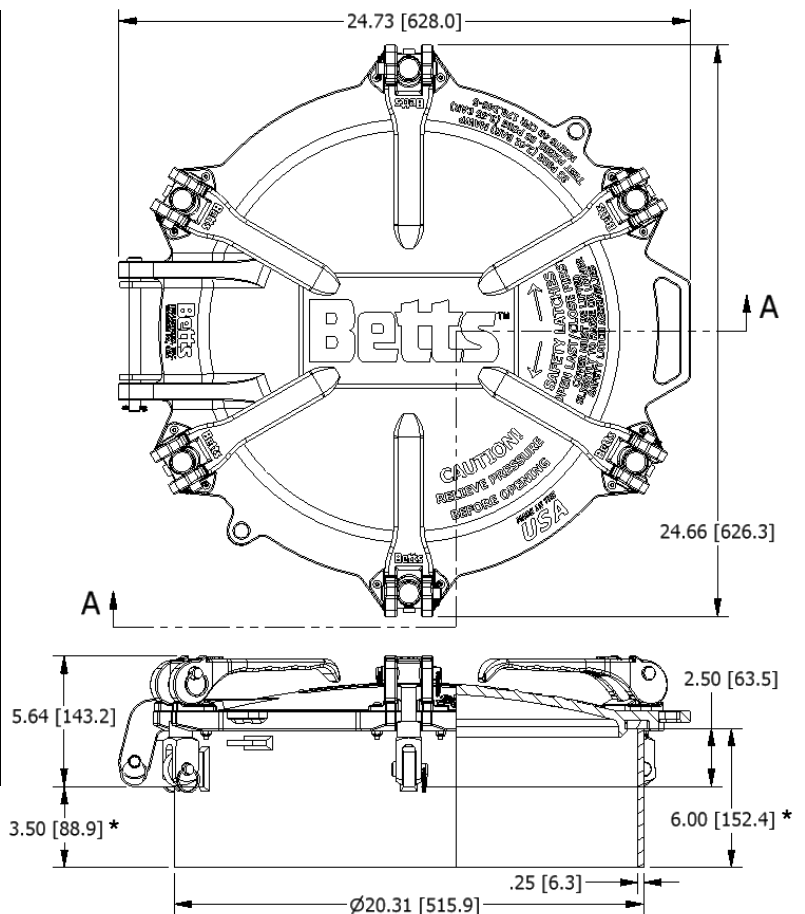


MAINTENANCE: Manhole assemblies should be inspected with sufficient frequency and due regard to the products carried.

- Inspect safety latches to insure they function properly. A properly functioning safety latch will not swing off the cover unless cover is lifted slightly off of the collar. Replace cover, clevis, latch, or wear saddle as needed.
- Inspect collar for corrosion or damage that could impair the strength or ability of manhole to seal.
- Inspect hardware for corrosion or damage that could reduce the strength of the hold-downs. Replace as needed.
- Replace worn or damaged gasket with a material compatible with products being carried.

Refer to maintenance manual MM-CL001 for more detailed instructions.

No.	Description	Req.	Material	Part No.
1	Weld Collar Assem. (6" High)	1	Alum. 5454	6916AL-6
2	Gasket	1	White Nitrile(FDA)	4383WB
			Black FKM	4383VT
			Fluorosilicone	4383FS
3	Circle Cotter	13	302 Stainless	9Q5010
4	Hinge Pin	1	Steel (Zc. Plt.)	9Q4757
			303 Stainless	4401SL
5	Manhole Cover	1	Alum.	8552AL-BETTS
6	Wear Saddle	6	Nylon	6907NY
7	Cap Screw	12	18-8 Stainless	9Q5075
			18-8 Stainless	9Q5085
8	Lock Nut	12	18-8 Stainless	9Q5085
9	Cam Latch	6	Alum.	6910AL
10	Latch Pin	6	Steel (Zc. Plt.)	9Q4753
			17-4 Stainless	9Q4754
11	5/8 Swing Bolt	6	Steel (Zc. Plt.)	4381ZC
			304 Stainless	4381SL
12	5/8 Clevis	6	Steel (Zc. Plt.)	4382ZC
			304 Stainless	4382SL
13	Clevis Pin	6	Steel (Zc. Plt.)	9Q4751
			17-4 Stainless	9Q4752
Replacement Wear Saddle Kit (Items 6,7, & 8)			Nylon/SS	6907NY-KIT
Replacement Latch Kit (Items 3,6,7,8,9,10,11,12 & 13)			Steel (Zc. Plt.)	4402ALZC
			Stainless	4402ALSL



WARNING: Use only genuine BETTS INDUSTRIES INC. replacement parts. Substitute parts can impair the proper function of this product.

* Dimensions vary dependent on collar height.