

FLUSH VALVE

STANDARD VALVE

- Complete Drainage
- Opens Into Tank
- Simplified Design
- Outside Screw & Yoke

With a metal to metal seat, the Betts Flush Valve is designed to handle heavy, viscous material. Fabricated design provides greater strength with less weight, full direct flow, complete drainage and replaceable parts. The outside screw and yoke keeps threads free of product, maintaining smooth operation.

Temperature Rating: Steel or Stainless 500°F. max.

NOTE: This valve must be mounted in a vertical position. Horizontal mounting will not allow the disc to seat properly. To close valve turn Handwheel in direction as shown above (clockwise rotation as viewed facing Handwheel). During this closing operation Handwheel will move outward exposing more of the stem threads.

Size	Flanged Outlet	Threaded Outlet	Wt.	Material
	Assembly No.	Assembly No.		
3"	FV863 MSM	TV863 MSM	14.3	Steel
				316 Stainless
4"	FV864 MSM	TV864 MSM	18.4	Steel
	FV864 SSM	TV864 SSM		316 Stainless
3"	FV893 MSM	TV893 MSM	14.6	Steel
	FV893 SSM	TV893 SSM		316 Stainless
4"	FV894 MSM	TV894 MSM	18.7	Steel
	FV894 SSM	TV894 SSM		316 Stainless

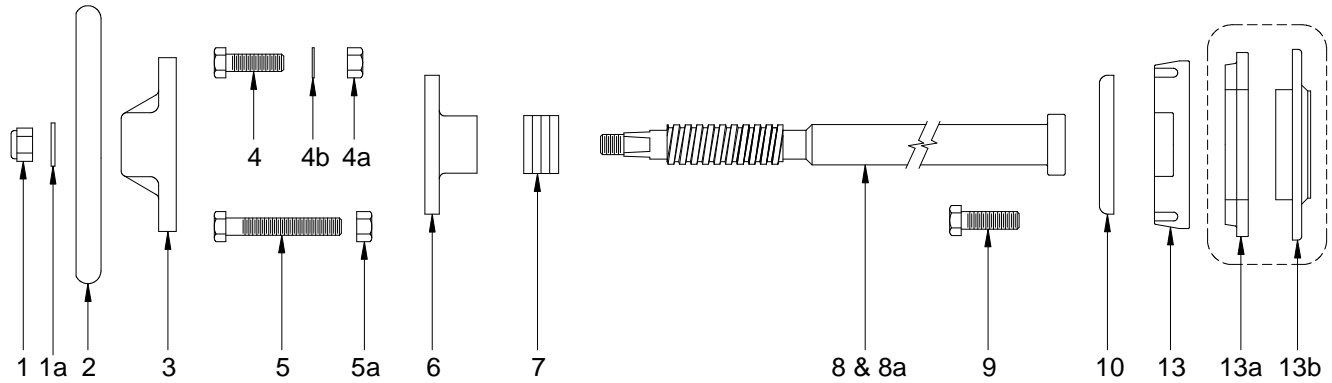
NOTES: Valves have Non-Asbestos packing and metal disc (suffix "M"). For replacement parts see Section 15 Page 2A. To provide a flat mounting surface, we recommend the use of our sumps as shown in Section 40. See Section 20 Page 5A for flange by thread adapter.

Dimensions

Size	A	B	C	D	E	F	G	H	Flanged Inlet				Flanged Outlet				Thrd. Outlet Pipe Size
									I.D.	O.D.	B.C.	Holes	I.D.	O.D.	B.C.	Holes	
3"	6 ¹ / ₄	5 ³ / ₈	4	5 ⁹ / ₁₆	11 ¹ / ₂	5	4 ¹⁵ / ₁₆	6 ⁷ / ₁₆	3 ³ / ₈	7 ¹ / ₄	6 ¹ / ₄	6 ⁻⁹ / ₁₆	3 ¹⁷ / ₃₂	6 ¹ / ₈	4 ⁷ / ₈	8 ⁻⁷ / ₁₆	3"
4"	8	6 ¹⁵ / ₁₆	5 ³ / ₁₆	7 ¹ / ₁₆	13	6 ¹ / ₂	6 ⁷ / ₁₆	8 ⁷ / ₁₆	4 ³ / ₈	8 ¹ / ₄	7 ¹ / ₄	8 ⁻⁹ / ₁₆	4 ¹⁷ / ₃₂	7 ¹ / ₈	5 ⁷ / ₈	8 ⁻⁷ / ₁₆	4"

FLUSH VALVE

PARTS LIST



No.	Description	Req'd.	Size	Material	Part No.	
1	Hex Nut	1	3" & 4"	Steel Zinc Plt.	9Q8579	
				304 Stnls.	9Q8580	
			6"	Steel Zinc Plt.	9Q5872	
			304 Stnls.	9Q5873		
1a	Washer	1	3" & 4"	Steel Zinc Plt.	9Q5913	
				18-8 Stnls.	9Q5915	
			6"	Steel Zinc Plt.	9Q5899	
			304 Stnls.	9Q5908		
2	Handwheel	1	3" & 4"	Aluminum	26604AL	
			6"	Aluminum	26605AL	
3	Nut	1	3" & 4"	Cast Iron	25468CI	
			6"	Bronze	25669BR	
4	Cap Screw 3/8"-16 x 1 1/4 1/2"-13 x 1 3/4	2	3" & 4"	Steel Zinc Plt.	9Q5810	
				304 Stnls.	9Q5815	
		4	6"	Steel Zinc Plt.	9Q5926	
			304 Stnls.	9Q5929		
4a	Hex Nut 3/8"-16 Thd. 1/2"-13 Thd.	2	3" & 4"	Steel Zinc Plt.	9Q5890	
				304 Stnls.	9Q5809	
		4	6"	Steel Zinc Plt.	9Q5812	
			304 Stnls.	9Q5853		
4b	Lockwasher External Tooth	2	3" & 4"	Steel Zinc Plt.	9Q5886	
		4	6"	Steel Zinc Plt.	9Q5918	
5	Adjusting Screw 3/8"-16 x 2 1/2	2	3" & 4"	Steel Zinc Plt.	9Q5889	
				304 Stnls.	9Q5802	
			6"	Steel	16756MS	
			304 Stnls.	16756SL		
5a	Hex Nut 3/8"-16 Thd.	2	3", 4" & 6"	Steel Zinc Plt.	9Q5890	
				304 Stnls.	9Q5809	
				304 Stnls.	15503SL	
6	Packing Gland	1	3" & 4"	Steel	19582MS	
			6"	316 Stnls.	19582SL	
7	Packing	Set	3" & 4"	Non-Asbestos	15655NA	
				Non-Asb/Tef	15655NT	
				Non-Asb/Tef	16769NT	
8	Stem Standard and ASA style	1	3"	Steel	25469MS	
				316 Stnls.	25469SS	
				4"	Steel	25470MS
					316 Stnls.	25470SS
				6"	Steel	26121MS
316 Stnls.	26121SS					

No.	Description	Req'd.	Size	Material	Part No.	
8a	Stem Steam Jacketed Style	1	3"	Steel	25470MS	
			4"	316 Stnls.	25470SS	
9	Cap Screw 3/8"-24 x 3/4	6	3", 4" & 6"	Steel Zinc Plt.	9Q5832	
				316 Stnls.	9Q5831	
10	Retainer Plate	1	3"	Steel	15605MS	
				316 Stnls.	15605SS	
				4"	Steel	15626MS
			316 Stnls.	15626SS		
13	Metal Disc	1	3"	Steel	16612MS	
				316 Stnls.	16612SS	
				4"	Steel	16613MS
			316 Stnls.	16613SS		
13a	Disc (Items 13a & 13b fit together for optional replacement for item 13)	1	3"	Steel	16670MS	
				316 Stnls.	16670SS	
				Buna-N	16657BN	
			Non-Asbestos	16657NA		
			Viton	16657VT		
			Teflon	16657TF		
13b	Disc Holder (Items 13a & 13b fit together for optional replacement for item 13)	1	4"	Buna-N	16583BN	
				Non-Asbestos	16583NA	
				Viton	16583VT	
				Teflon	16583TF	
				6"	Buna-N	16752BN
Non-Asbestos	16752NA					
Viton	16752VT					
			Teflon	16752TF		
13b	Disc Holder (Items 13a & 13b fit together for optional replacement for item 13)	1	3"	Steel	15604MS	
				316 Stnls.	15604SS	
				4"	Steel	15625MS
					316 Stnls.	15625SS
				6"	Steel	26120MS
316 Stnls.	26120SS					

WARNING Use only genuine Betts Industries, Inc. replacement part. Use of substitute parts can impair the proper functioning of this product.